

Modular Flower Shawl Crochet Tutorial

Complete Step-by-Step Guide (US Terms)

This detailed crochet tutorial is based entirely on the modular flower shawl diagram shown in the reference chart. The instructions below are written clearly and carefully so that beginners and experienced crocheters alike can successfully create the shawl from start to finish.

The shawl is made from individual floral square motifs that are joined together diagonally to create a beautiful diamond-shaped wrap with a scalloped border.

Finished Size Approximation:

- Width: 60 inches
- Height: 35 inches

Skill Level:

- Intermediate
- Advanced beginner friendly if you already know basic crochet stitches

Crochet Terms Used:

- US Terminology

Materials Needed

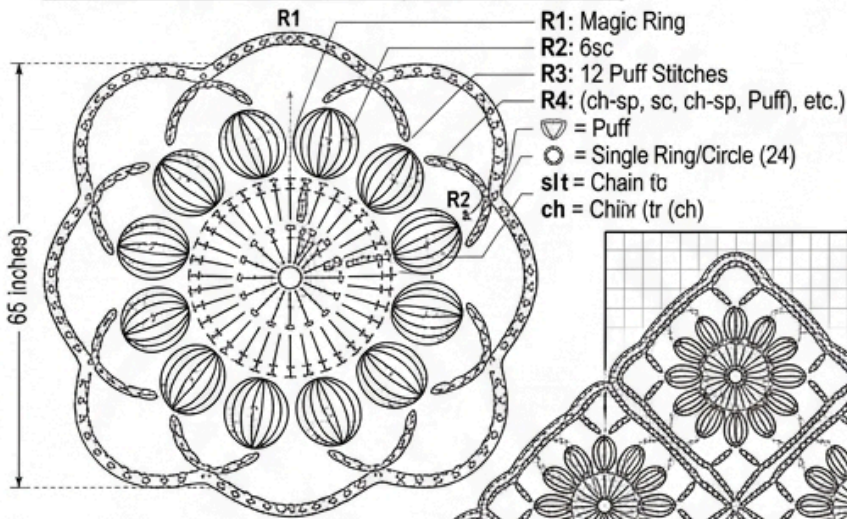
- Worsted weight yarn or light DK yarn
- Crochet hook appropriate for your yarn
 - Suggested: 4.0 mm to 5.0 mm
- Yarn needle
- Scissors
- Stitch markers (optional)

Stitch Abbreviations

- MR = Magic Ring
- ch = chain
- sl st = slip stitch
- sc = single crochet
- hdc = half double crochet
- dc = double crochet
- tr = treble crochet
- Puff = puff stitch
- <https://damviral.com/> **SEE THE BEST PATTERNS**

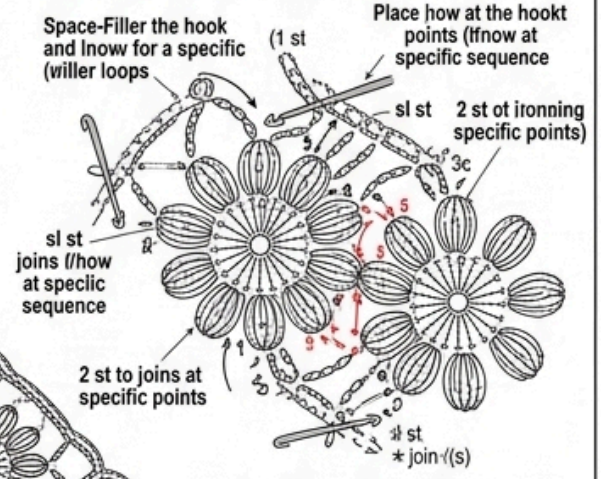
MODULAR FLOWER SHAWL: COMPLETE PATTERN DIAGRAM (USA TERMS)

MAGNIFIED FLOWER MOTIF (SINGLE MODULE)

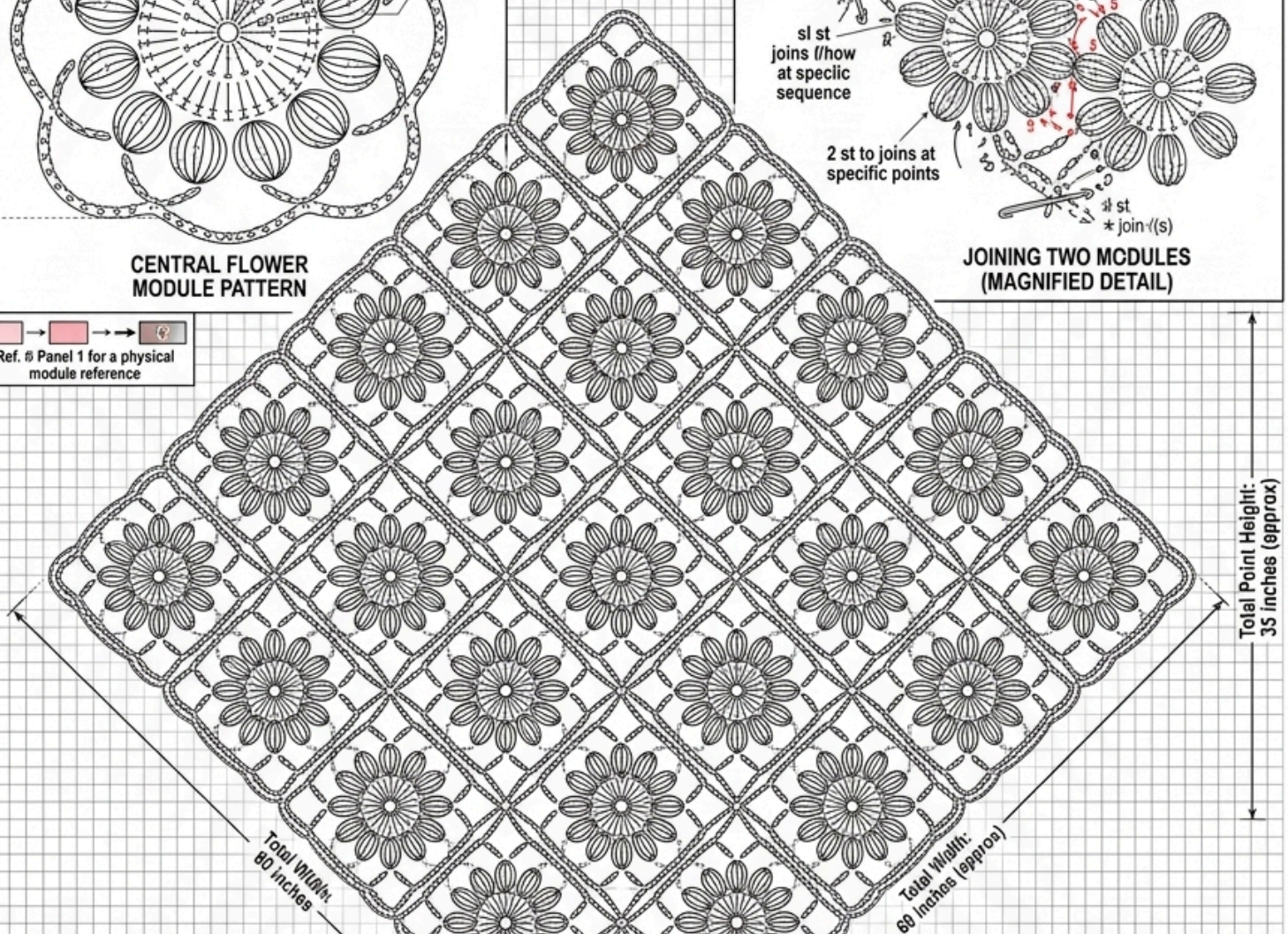
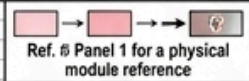


JOINING METHOD SCHEMATIC

JOINING TWO MODULES (MAGNIFIED DETAIL)

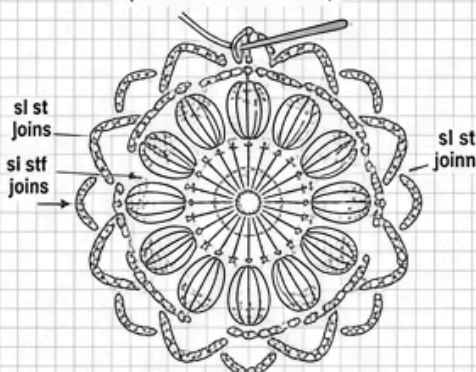


JOINING TWO MODULES (MAGNIFIED DETAIL)



COMPONENT SLOWER SCHEMATIC

JOINING TWO MODULES (MAGNIFIED DETAIL)



Ref. <IMAGE 0> Panel 1 for a physical module reference

SHAWL EDGE/BORDER SCHEMATIC

SHAWL EDGE DETAIL (SCALLOPED BORDER)



Row: by-Round: (ch-sp, P1 st. (ch-sp, solng, scallop puttr)
 Row: by-Round: (ch-sp, sl st. (ch-sp, scalloped bordirr),
 Row: by-Round in 1, efl poine),
 Row: by-cond-line fl l/ w/4 or and chain-loop scallop edging

STITCH GLOSSARY (USA TERMS)

- | | |
|---------------------------|------------------------------------|
| sc = Single Crochet | ☐ = Puff = Puff Stitch |
| hdc = Half Double Crochet | — = sl st = Slip Stitch |
| dc = Double Crochet | ○ = ch = Chain |
| tr = Treble Crochet | ◎ = Magic Ring = Magic Ring/Circle |
| ☐ = Puff = Puff Stitch | |

- <https://damviral.com/> SEE THE BEST PATTERNS

Understanding the Construction

The shawl is built from:

- Repeating flower motifs
- Joined-as-you-go connections
- A final scalloped edging

Each motif contains:

1. Circular flower center
2. Puff stitch petals
3. Square outer frame
4. Decorative scalloped corners

The motifs are joined diagonally to form the shawl shape.

How Many Motifs You Need

The original shawl layout uses approximately:

- 25 floral square motifs

You may increase or reduce the number depending on desired size.

How to Make the Flower Motif

Round 1 — Create the Center Ring

Start with a Magic Ring.

Work:

- 6 sc into the Magic Ring
- Pull ring tight
- Join with sl st to first sc

You should now have:

- 6 stitches total

- <https://damviral.com/> SEE THE BEST PATTERNS

Round 2 — Build the Flower Base

Ch 2.

Work 2 dc into each stitch around.

You will have:

- 12 dc total

Join with sl st.

The center circle should now appear larger and even.

Round 3 — Create the Puff Petals

This round creates the flower petals.

Ch 2.

In each stitch around, make:

- 1 Puff Stitch
- ch 1

Repeat around entire circle.

You should end with:

- 12 puff petals

Join with sl st.

How to Make a Puff Stitch

Yarn over, insert hook into stitch, pull up a loop.

Repeat this process 3 to 5 times in the same stitch.

Yarn over and pull through all loops.

Ch 1 to close the puff securely.

Your flower should now look full and dimensional.

- <https://damviral.com/> SEE THE BEST PATTERNS

Round 4 — Begin the Square Shape

This round transforms the flower into a square module.

Slip stitch into the nearest chain space.

Work the following into each chain space:

- ch 3
- 2 dc
- ch 2
- 3 dc

At every fourth petal space create a corner:

- 3 dc
- ch 3
- 3 dc

Between corners:

- ch 1 or ch 2 depending on tension

Continue around.

Join with sl st.

You should now clearly see a square forming around the flower.

Round 5 — Outer Decorative Frame

This round adds the curved scalloped frame shown in the chart.

In each side space:

- sc
- ch 5
- sc

Around corner spaces:

- sc
- ch 7
- sc

Continue around evenly.

Join with sl st.

- <https://damviral.com/> SEE THE BEST PATTERNS

Fasten off if making motifs separately.

Checking Motif Size

Each completed module should measure approximately:

- 5 to 6 inches square

All motifs must remain consistent in size for smooth joining.

Making Multiple Motifs

Repeat the flower motif instructions until you have enough motifs for the shawl layout.

Arrange motifs diagonally as shown in the diagram:

- 1 motif at top
- Increase row by row
- Then decrease symmetrically

This creates the triangular shawl shape.

Joining the Motifs Together

The diagram uses a slip stitch joining method.

You may:

- Join as you go
- Or sew afterward

The tutorial below follows the chart's joining method.

Join-As-You-Go Method

Place two motifs with right sides facing upward.

Match the corner loops and side chain spaces.

Insert hook through:

- corresponding chain loop on first motif
- matching chain loop on second motif

Work:

- sl st to connect

- <https://damviral.com/> SEE THE BEST PATTERNS

Continue joining:

- 2 side loops at a time
- then corner joins

Do not pull too tightly.

The motifs should lie flat after joining.

Joining Sequence

The chart indicates joining occurs:

- first at corner points
- then along side arches

Typical joining sequence:

1. Join top corner
2. Join middle side loops
3. Join bottom corner

Continue until all neighboring motifs are connected.

Layout Guide for the Shawl

Arrange motifs into diagonal rows.

Example arrangement:

Row 1:

- 1 motif

Row 2:

- 2 motifs

Row 3:

- 3 motifs

Continue increasing until widest section.

Then decrease again to create the lower point.

Tips for Perfect Alignment ✨

- <https://damviral.com/> SEE THE BEST PATTERNS
- Block motifs before joining if needed
- Keep stitch tension consistent
- Count corner spaces carefully
- Use stitch markers during joining
- Lay shawl flat frequently to check symmetry

Adding the Scalloped Border

After all motifs are joined, begin the outer edging.

Attach yarn at any edge space.

Border Round 1

Work around entire shawl edge:

- sc in edge space
- ch 5
- sc in next space

Repeat continuously.

At sharp corners:

- ch 7 instead of ch 5

Join with sl st.

Border Round 2 — Scalloped Finish

Into each large chain loop work:

- 1 sc
- 1 hdc
- 3 dc
- 1 hdc
- 1 sc

This creates the rounded scallop effect visible in the chart.

Continue around entire shawl.

Join with sl st.

Fasten off.

- <https://damviral.com/> SEE THE BEST PATTERNS

Weaving in Ends

Use a yarn needle to weave all loose ends securely into the back of motifs.

Avoid trimming too closely.

Blocking the Shawl

Blocking is strongly recommended.

Steps:

1. Wet block or steam block
2. Pin shawl into final triangular shape
3. Open scallops evenly
4. Allow to dry completely

This step dramatically improves the final appearance.

Customization Ideas

You can personalize the shawl by:

- Using gradient yarn
- Making each flower a different color
- Adding beads to puff stitches
- Enlarging motifs with extra rounds
- Creating a blanket instead of a shawl

Troubleshooting Guide

Motifs Curling

- Loosen tension
- Add extra chain between corners

Shawl Wavy

- Too many stitches in border
- Reduce chain counts slightly

Motifs Buckling

- Puff stitches may be too tight
- Block pieces before joining

- <https://damviral.com/> SEE THE BEST PATTERNS

Uneven Shape

- Double-check motif placement
- Count rows carefully

Final Result

You will have:

- A modular floral lace shawl
- Diamond/triangle construction
- Textured puff flower motifs
- Elegant scalloped edging
- Lightweight drape with decorative structure

This shawl works beautifully as:

- Spring wrap
- Wedding shawl
- Evening accessory
- Gift project
- Heirloom crochet piece

Happy crocheting! 