

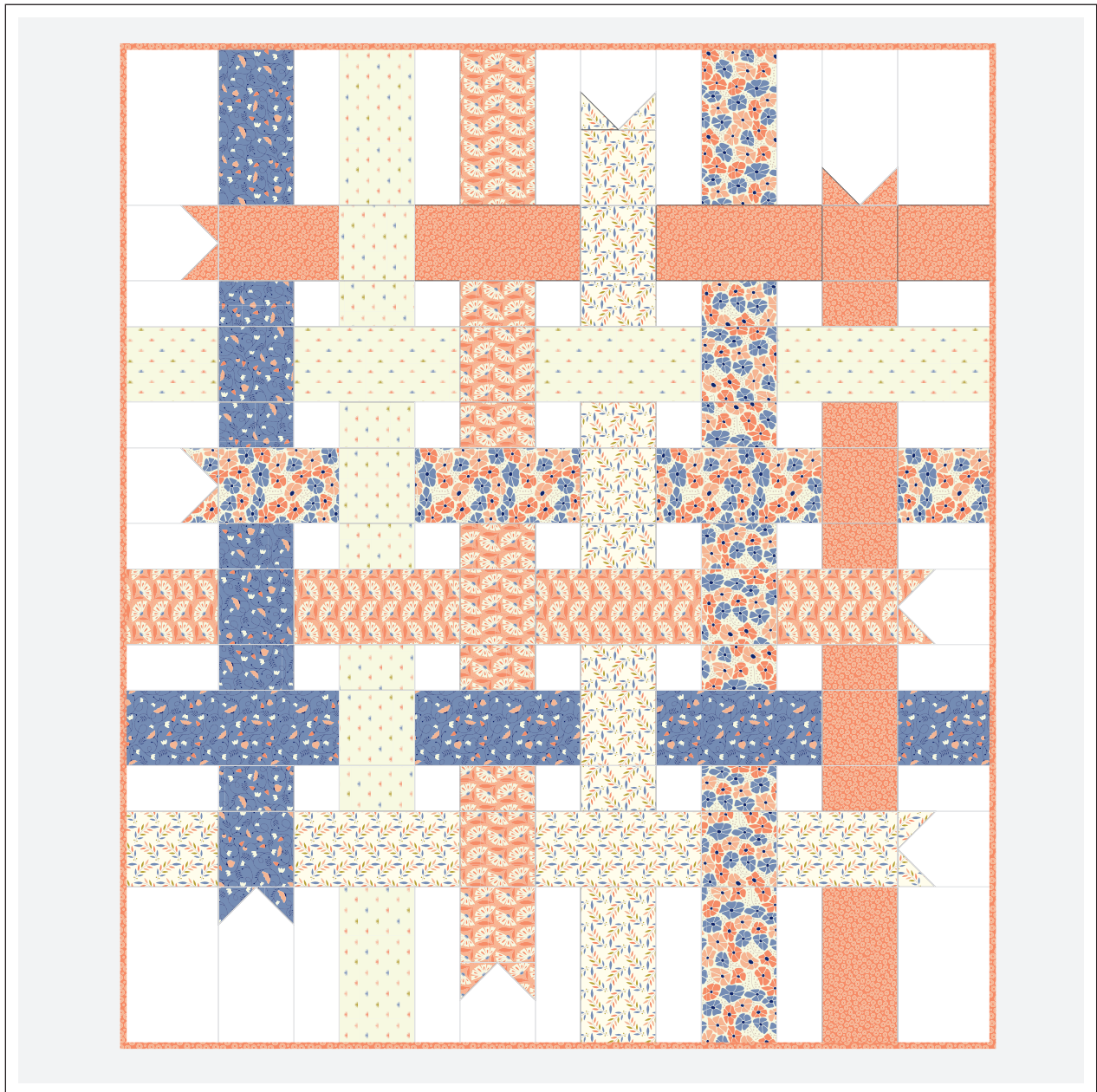


CLOUD9

FABRICS

FREE PROJECT SHEET **RIBBON BOX QUILT**

SIZE 55" x 63"



DESIGN **MICHELLE ENGEL BENCSKO**

TECHNICAL EDITOR **LINDA SPIRIDON**

RIBBON BOX QUILT

SIZE: 55" x 63"

DESIGNER: Michelle Engel Benckso

TECHNICAL EDITOR: Linda Spiridon

EXCLUSIVE TO: **SPOTLIGHT STORES**

SUBSTRATE: Quilter's Cotton

DELIVERY DATE: 2017

Note: All possible care has been taken to assure the accuracy of this pattern. We are not responsible for printing errors or the manner in which individual work varies. Please read instructions carefully before starting the construction of this quilt. If desired, wash and iron your fabrics before starting to cut.

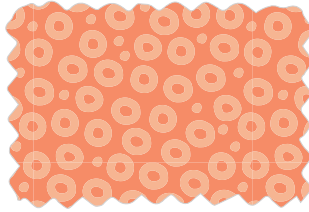
MATERIALS NEEDED



FABRIC A | 900

limestone

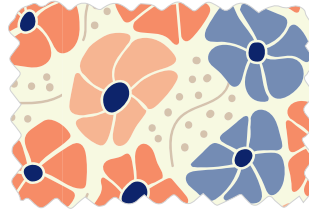
1 ¼ yards



FABRIC B & M

organic dots

½ yard



FABRIC C & E

organic petunias

½ yard



FABRIC D & F

organic leaves

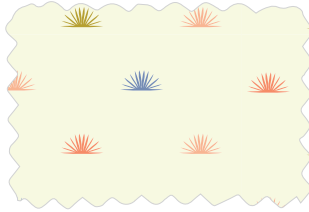
½ yard



FABRIC G & K

organic ivy floral

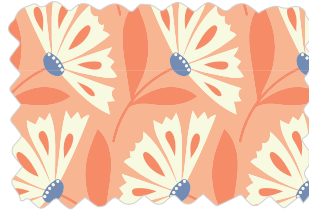
½ yard



FABRIC H & L

organic grass

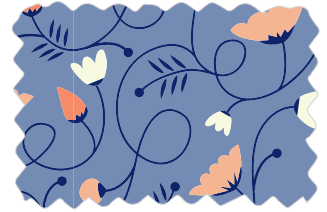
½ yard



FABRIC I & J

organic daisy

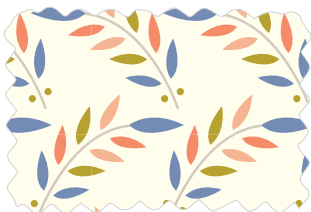
½ yard



BINDING

organic ivy floral

½ yard



BACKING

organic leaves

4 yards

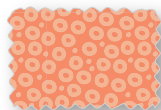
CUTTING DIRECTIONS

Note: To get consistent patterning across the ribbon, cut the pieces horizontally across fabric.



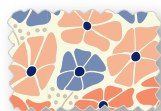
FABRIC A

- 4- 6½" x 10½"
- 2- 5½" x 10½"
- 4- 5½" x 6½"
- 2- 5½" squares
- 10- 3" x 10½"
- 10- 3" x 6½"
- 25- 3" squares



FABRIC B & M

- 3- 5½" x 10½"
- 1- 5½" x 8"
- 1- 5½" x 6½"
- 5- 5½" x 3"
- 3- 5½" squares
- 4- 3" squares



FABRIC C & E

- 4- 5½" x 10½"
- 1- 5½" x 8"
- 1- 5½" x 6½"
- 3- 5½" squares
- 5- 5½" x 3"
- 2- 3" squares



FABRIC D & F

- 3- 5½" x 10½"
- 1- 5½" x 8"
- 1- 5½" x 6½"
- 4- 5½" squares
- 5- 5½" x 3"
- 4- 3" squares



FABRIC G & K

- 1- 5½" x 14"
- 3- 5½" x 10½"
- 1- 5½" x 6½"
- 3- 5½" squares
- 5- 5½" x 3"
- 2- 3" squares
- 5- 2.5" strips
(for Binding)



FABRIC H & L

- 1- 5½" x 14"
- 4- 5½" x 10½"
- 1- 5½" x 6½"
- 3- 5½" squares
- 5- 5½" x 3"



FABRIC I & J

- 3- 5½" x 10½"
- 1- 5½" x 8"
- 1- 5½" x 6½"
- 4- 5½" squares
- 5- 5½" x 3"
- 4- 3" squares

¼" seam allowance unless otherwise noted.

MAKING THE RIBBON TAILS

1. Mark a diagonal line on the wrong side of all 3" *printed* squares. [fig 1]
2. Take 4 of the **FABRIC A** 5½" x 6½" pieces and 2 each of the **FABRIC B, D, E, J** 3" squares. Lay a 3" square right sides together to one corner of the 5½" end of **FABRIC A** piece and sew on the diagonal line. Trim excess. Press open towards print. [fig 2a] Repeat with the 2nd square at the other corner of the 5½" end. Trim excess. Press open towards print. [fig 2b]
3. Repeat *step 2* with 2 **FABRIC A** 5½" x 10½" and 2 of each of the **FABRIC G, M** 3" squares. [fig 3]
4. Again, repeat *step 2* using the 2 **FABRIC A** 5½" squares and 2 each of the **FABRIC F, I** 3" squares. [fig 4]
5. Sew **FABRIC F, I** ribbon tails to a matching fabric 5½" square. [fig 5]

ASSEMBLING THE QUILT

6. Arrange fabric pieces according to quilt diagram working in rows across.

Row 1: begin with a **FABRIC A** 6½" x 10½" piece, sew to a **FABRIC G** 5½" x 10½" piece, and sew to a **FABRIC A** 3" x 10½" piece. Continue following the **QUILT DIAGRAM** noting correct order and size of fabric - be mindful of direction of prints. Press to one direction.

Row 2: begin with **FABRIC B** ribbon ends to the **FABRIC B** 5½" x 8" piece. Continue following the diagram across the row. Press rows in alternate directions from row to row.

7. Continue following the **QUILT DIAGRAM** until all 13 rows are complete.
8. Sew horizontal rows together and press in one direction.
9. Layer the backing, batting, and quilt top. Baste, quilt, and bind.

fig 1 (each piece)

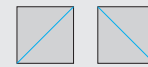


fig 2a

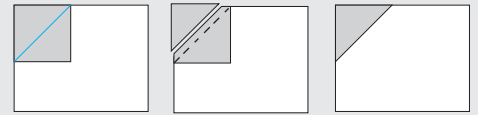


fig 2b

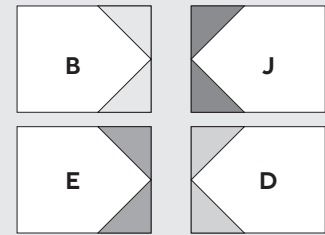
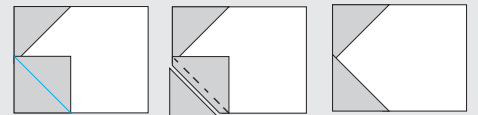


fig 3

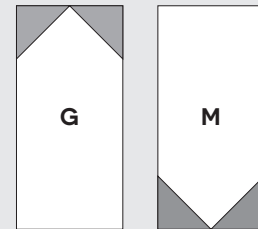
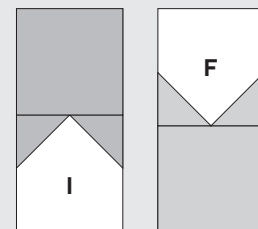


fig 4



fig 5



QUILT DIAGRAM

